

MAXTEC
PRODUCT CATALOG

SENSING

Why The Red Tape?	7
FiO ₂ / Oxygen Sensors	8
ReusableSpO ₂ Probes	18
Soft Tip SpO ₂ Probes	19
Disposable SpO ₂ Probes	20
SpO ₂ Interface Cables	21

ANALYSIS

Oxygen Monitors	23
Oxygen Analyzers	25
Pulse Oximeters	29

DELIVERY

Blenders and Mixers	35
Flow Meters	44
Vent, Blend & Flow Support	49
Patient Care Stands	54

NICU

Neonatal & Pedi Care	57
----------------------------	----

BRACKETS / ACCESSORIES

Brackets	59
I.V. Pole Accessories	61
Flow Diverters & Adapters	62

► Company Profile



MAXTEC CORPORATE HEADQUARTERS - SALT LAKE CITY, UTAH

ABOUT MAXTEC

Maxtec is a globally recognized gas sensing, analysis and delivery company. Our signature oxygen sensors go out to numerous ventilator, anesthesia, neonatal and high flow nasal oxygen therapy manufacturers that choose Maxtec sensor power inside their devices.

Maxtec has the largest offering of handheld O₂ analyzers that are specialized for various applications. We have a wide range of high quality SpO₂ probes, flow sensors and EtCO₂ indicators. Maxtec offers products that mix and blend gas or build out a blender to make gas delivery safer, and is rich in options that compliment high flow delivery systems in the market today.

- **Year Established:** 1991
- **Number of Employees:** 120+
- **Customer Base:** 130+ Countries Worldwide
- **Markets Served:** OEM, Hospital (Respiratory, Anesthesia, Biomed, NICU, ED), Homecare, Dental, Sleep, EMS, Veterinary, Scuba, Industrial, Automotive, and Service.

► NEW WEBSITE - MORE INFORMATION

Maxtec.com was designed with simplicity and portability in mind. It is our goal to provide the ultimate browsing experience whether you are searching from a desktop, tablet or smartphone. Each product now features it's own page and highlights key benefits that will make your purchasing decision easier. There are also comparison charts and product videos that can provide a more visual demonstration of the products.

► Company Services



MACHINE SHOP

Maxtec can provide your company professional machining services for your specific needs.. Whether it be for a prototype or production work, our skilled machinists are CNC certified to provide high quality parts with a short turnaround time. Contact the Maxtec product development team for more information.



PRODUCT SERVICE / REPAIR

Maxtec offers full service on our manufactured products. Our service department professionals are highly trained and certified on each and every product.

We offer the following service options:

- ▶ Regular preventative maintenance
- ▶ Technical support
- ▶ Repair
- ▶ Product appearance upgrades
- ▶ Sensor replacement

▶ Ultimate Safety



*Oxygen is the key to human existence, and Maxtec products are dedicated to the accurate measurement of this life sustaining element. Maxtec was founded on the principle that oxygen concentration should always be measured for **Ultimate Safety!***

OXYGEN TO THE CORE

Maxtec's initial products featured oxygen sensors and oxygen analyzers. To this day these products are the core of the company and we are a worldwide leader in the supply of oxygen sensors and analyzers. We supply oxygen sensors for most ventilators, anesthesia machines, oxygen analyzers and other types of medical equipment. When oxygen is delivered to a patient, Maxtec products are a must, to ensure the proper gas mixture is delivered.

FORWARD THINKING

As Maxtec branches out with new products, we are committed to staying true to our principle that oxygen needs to be measured. Our goal is to always produce **a better method**, to measure oxygen and help protect the patient.

GREAT VALUE

All Maxtec products have a lower cost of ownership than similar products. Our oxygen sensors and analyzers have the longest warranties in the industry. When you buy from Maxtec you will have the peace of mind receiving top-notch products and unparalleled service — all with the assurance of **Ultimate Safety!**



SENSING

FIO₂ & SPO₂ SENSORS

“Our protection tape enables the sensor to operate at reduced oxygen levels during storage”



► Why The Red Tape?

Have you wondered why the “MAX” series sensors and analyzers come with red tape?

Our innovative protection tape enables the sensor to operate at a reduced level of oxygen during transportation and storage, which prolongs the life and ensures you, as the customer, receive the freshest, longest lasting sensor. Under these conditions, the sensor operates at only 40% of the normal room air level saving approximately 60,000% O₂ hours of sensor life, which extends the sensors life and saves you money. *based on a 6 month transport/storage period*

Formula: “hours exposed to O₂%” x “O₂ Concentration” = O₂% hours

10 hours x 21% O₂ = 210 O₂% hours

10 hours x 100% O₂ = 1000 O₂% hours

How can I prolong the life of my oxygen sensors?

- Store sensors upright with the membrane facing down, at room temperature
- Absolute shipping / storage temperature range is -15° to 50° C
- Do not expose sensors to vacuum, high pressure, shock, or vibration
- Do not expose sensors to acidic or organic solvent vapors, chlorine (bleach), ozone, or dust
- Recognize that pressure, temperature, relative humidity, and exposure to oxygen will all effect the useful life of galvanic oxygen sensor

► FiO₂ Sensors

24

MONTH
WARRANTY



MAX-2
R107P20

PRIMARY APPLICATIONS

- **Drager** [6803290, 6850645, Narkomed, Fabius GS, Tiro]
- **Hewlett Packard** [15201A]
- **Invivo** [Magnitude]

SENSOR CROSS REFERENCE

- **Analytical Industries** [PSR-11-915-1]
- **Teledyne** [R31]

12

MONTH
WARRANTY



MAX-3
R109P11

PRIMARY APPLICATIONS

- **Mindray** [VT50 Ventilator]
- **Paragon** [Platinum SC430]
- **Penlon** [Prima SP2]

SENSOR CROSS REFERENCE

- **Analytical Industries** [PSR-11-60-03]
- **City Technology** [MOX-3]

12

MONTH
WARRANTY



MAX-7
R109P09

PRIMARY APPLICATIONS

- **Teledyne** [AX/MX300 Series,]

SENSOR CROSS REFERENCE

- **Analytical Industries** [PSR-11-77]
- **City Technology** [MOX-3]

14

MONTH
WARRANTY



MAX-9
R114P80

PRIMARY APPLICATIONS

- **HillRom** [6736140]
- **Hudson** [5500, 5590, 5577, 5584, 5595, 6477]

SENSOR CROSS REFERENCE

- **Analytical Industries** [PSR-11-55]
- **International Technologies** [M-13]
- **Ohio Medical** [655265]
- **Teledyne** [R13 #B-39636]

► FiO₂ Sensors

14
MONTH
WARRANTY



MAX-10
R112P10

PRIMARY APPLICATIONS

- **GE (Ohmeda)** [6050-0004-110, Modulus SE, 7900 Series, Aisys, Aestiva Series, SmartVent S-5, Aespire, Avance]

SENSOR CROSS REFERENCE

- **Analytical Industries** [PSR-11-915-4]
- **City Technology** [MOX-7]
- **EnviteC** [OOM-110]
- **International Technologies** [M-10]
- **Teledyne** [R30MED #B-729391]

12
MONTH
WARRANTY



MAX-11
R113P10

PRIMARY APPLICATIONS

- **Drager** [6803290, 6850645, Narkomed, Fabius GS, Evita Family, Babylog, Fabius Series]
- **Invivo** [Magnitude]
- **HillRom** [PSR-11-915-2]
- **Hudson** [5557]

SENSOR CROSS REFERENCE

- **Analytical Industries** [PSR-11-915-2]
- **City Technology** [MOX-16]
- **EnviteC** [OOM-201]
- **International Technologies** [M-02]
- **Teledyne** [R23 #C-611391]

12
MONTH
WARRANTY



MAX-11i
R113P06

PRIMARY APPLICATIONS

- **Drager** [Incubators, 18000 High Temp Application]

SENSOR CROSS REFERENCE

- **Philips (Respironics)** [NeoPAP]

24
MONTH
WARRANTY



MAX-12
R109P45

PRIMARY APPLICATIONS

- **Datascope** [0600-00-0002 (MAX-12F)]
- **Hamilton** [396008, 396009, Galileo, Raphael, Arabella, Aladdin, 51254, G5, Arabella]
- **Hudson** [5556]
- **IMT** [PF300]
- **Sensidyne** [Acutonic Hi Frequency Jet Ventilator, OOM102]
- **Spacelabs** [90513, Capnograph]
- **Taema** [YR049700, Cesar-2, Horus-4]

SENSOR CROSS REFERENCE

- **Analytical Industries** [PSR-11-917-M]
- **City Technology** [MOX-9]
- **EnviteC** [OOM-202]
- **International Technologies** [M-04]
- **Ohio Medical** [472062, 470644]
- **Siemens** [9004979-E347E]
- **Teledyne** [R24MED #B-62321]

► FiO₂ Sensors

14

MONTH
WARRANTY



MAX-12A
R109P48

PRIMARY APPLICATIONS

- **HillRom** [Isolette Incubator]
- **Philips (Respironics)** [NeoPAP]

SENSOR CROSS REFERENCE

- **Analytical Industries** [PSR-11-917-M1]
- **EnviteC** [OOM-106]

14

MONTH
WARRANTY



MAX-12C
R109P53

PRIMARY APPLICATIONS

- **Viasys** [Avea Ventilator, Infant SiPaP]

SENSOR CROSS REFERENCE

- **N/A**

14

MONTH
WARRANTY



MAX-13
R115P10

PRIMARY APPLICATIONS

- **N/A**

SENSOR CROSS REFERENCE

- **N/A**

14

MONTH
WARRANTY



MAX-13
R115P10

PRIMARY APPLICATIONS

- **N/A**

SENSOR CROSS REFERENCE

- **N/A**

14 MONTH WARRANTY



MAX-13-250
R125P07

PRIMARY APPLICATIONS

- ▶ **Covidien** [4-020933-00, 7820 Monitor, 7200 Vent]
- ▶ **Datascope** [Anestar S]
- ▶ **HillRom** [6735142]
- ▶ **Invivo** [9445 Sensor]
- ▶ **MiniOX I, MiniOX III** [406931, MiniOX 3000]
- ▶ **Philips (Respironics)** [Criterion Vent, Espirit Vent Lifecare (PLV-102)]
- ▶ **Philips-Respironics** [Criterion Vent, Espirit Vent Lifecare (#PLV-102), 37-079 Sensor]
- ▶ **Viasys** [66030 Sensor, 6400 Vent, 8400 Vent, VIP Vent]

SENSOR CROSS REFERENCE

- ▶ **Analytical Industries** [PSR-11-917-J]
- ▶ **Teledyne** [R17 #C-43690]

14 MONTH WARRANTY



MAX-13C
R115P01

PRIMARY APPLICATIONS

- ▶ **BioMed Devices** [4433]

SENSOR CROSS REFERENCE

- ▶ N/A

14 MONTH WARRANTY



MAX-14
R116P80

PRIMARY APPLICATIONS

- ▶ **Devilbiss** [02ANA-101 Sensor]

SENSOR CROSS REFERENCE

- ▶ **Ohio Medical** [806572, MiniOX 1A]

14 MONTH WARRANTY



MAX-125M
R140P07-001

PRIMARY APPLICATIONS

- ▶ N/A

SENSOR CROSS REFERENCE

- ▶ N/A

► FiO₂ Sensors

14

MONTH
WARRANTY



MAX-15M
R115P63

PRIMARY APPLICATIONS

- **Mindray** [A5, Wato Series Monitors]

SENSOR CROSS REFERENCE

- **City Technologies** [Mox-2]
- **Analytical Industries** [PSR-11-917-J7]
- **Mindray** [0600-00-0149]

16

MONTH
WARRANTY



MAX-16
R114P70

PRIMARY APPLICATIONS

- **Covidien** [4-072214-00, 840, 740, 760, PB2000 Tester]

SENSOR CROSS REFERENCE

- **Analytical Industries** [PSR-11-917M]
- **City Technology** [MOX-1]
- **EnviteC** [OOM-101-Air]
- **International Technologies** [M-15]
- **Ohio Medical** [716044, PB840]
- **Teledyne** [R-24 C-61340]

18

MONTH
WARRANTY



MAX-16HT
R114P73

PRIMARY APPLICATIONS

- **Versamed** [Vent]

SENSOR CROSS REFERENCE

- **N/A**

12

MONTH
WARRANTY



MAX-17
R116P10

PRIMARY APPLICATIONS

- **Hudson** [5558]
- **Penlon** [MTS]

SENSOR CROSS REFERENCE

- **Analytical Industries** [PSR-11-77]
- **City Technology** [MOX-4]
- **EnviteC** [OOM-105]
- **International Technologies** [M-07]
- **Ohio Medical** [804674]
- **Teledyne** [T-7]

► FiO₂ Sensors

SENSING.

ANALYSIS.

DELIVERY.

12

MONTH
WARRANTY



MAX-18
R116P40

PRIMARY APPLICATIONS

- **Hudson** [5569, 5525, 5528, 5529, 5550, 5552]

SENSOR CROSS REFERENCE

- **Analytical Industries** [PSR-11-33-1]
- **Ohio Medical** [485905]
- **Teledyne** [CIR #B-39022]

12

MONTH
WARRANTY



MAX-19
R116P60

PRIMARY APPLICATIONS

- **Hamilton** [HM-01, Veolar, Amadeus, Arabella]
- **Hudson** [5565, 5568, C1, C-01]

SENSOR CROSS REFERENCE

- **Analytical Industries** [PSR-11-33-1]
- **EnviteC** [OOM-107]
- **International Technologies** [M-05]
- **Ohio Medical** [478841]
- **Teledyne** [T1 #A-37016]

12

MONTH
WARRANTY



MAX-23
R116P06

PRIMARY APPLICATIONS

- **Teleflex** (Hudson) [5566]

SENSOR CROSS REFERENCE

- **Analytical Industries** [PSR-11-33-1]
- **City Technology** [MOX-1]
- **EnviteC** [OOM-102]
- **Teledyne** [R22 #C-44611]

16

MONTH
WARRANTY



MAX-24
R109P15

PRIMARY APPLICATIONS

- **Stephan** [Stephanie Infant Ventilator]

SENSOR CROSS REFERENCE

- **N/A**

► FiO₂ Sensors

24

MONTH
LIFESPAN



PRIMARY APPLICATIONS

- N/A

SENSOR CROSS REFERENCE

- **Figaro** [KE-25]

MAX-25
R100P51-002

12

MONTH
LIFESPAN



PRIMARY APPLICATIONS

- **Hudson** [5811]

SENSOR CROSS REFERENCE

- N/A

MAX-27
R116P11

12

MONTH
LIFESPAN



PRIMARY APPLICATIONS

- **GE (Ohmeda)** [Giraffe]

SENSOR CROSS REFERENCE

- N/A

MAX-43
R109P07

12

MONTH
LIFESPAN



PRIMARY APPLICATIONS

- **Hudson** [5800 Monitor, 5801 Analyzer, 5803 Sensor]
- **Maxtec** [TecO₂ ME]

SENSOR CROSS REFERENCE

- N/A

MAX-47
R112P16

► FiO₂ Sensors

12

MONTH
LIFESPAN

MAX-48
R112P18

PRIMARY APPLICATIONS

► **Analytical Industries** [All2001 Analyzer, All2002 Analyzer]

SENSOR CROSS REFERENCE

► **Analytical Industries** [All-11-60]

12

MONTH
LIFESPAN

MAX-125WF
R140P07-002

PRIMARY APPLICATIONS

► N/A

SENSOR CROSS REFERENCE

► N/A

12

MONTH
LIFESPAN

MAX-50
R100P95-003

PRIMARY APPLICATIONS

► N/A

SENSOR CROSS REFERENCE

► **Figaro** [KE-50]

24

MONTH
LIFESPAN

MAX-550E
R140P02

PRIMARY APPLICATIONS

► **Maxtec** [Maxblend 2, MaxO₂ ME]

SENSOR CROSS REFERENCE

► N/A

► FiO₂ Sensors

24
MONTH
WARRANTY



MAX-250
R125P01-002

PRIMARY APPLICATIONS

- **Fluke** [VT Mobile]
- **Maxtec** [OM-25A]

SENSOR CROSS REFERENCE

- **Analytical Industries** [PSR-11-75-KE1]
- **Teledyne** [R29]

24
MONTH
WARRANTY



MAX-250+
R125P02-011

PRIMARY APPLICATIONS

- **Maxtec** [MaxO₂+A]

SENSOR CROSS REFERENCE

- **Analytical Industries** [PSR-11-75-KE10+]

24
MONTH
WARRANTY



MAX-250A
R125P04-001

PRIMARY APPLICATIONS

- **Spacelabs**

SENSOR CROSS REFERENCE

- **N/A**

24
MONTH
WARRANTY



MAX-250E
R125P03-002

PRIMARY APPLICATIONS

- **CareFusion** [Sentry Blender]
- **Fluke** [VT Mobile]
- **Maxtec** [MaxO₂+AE, OM-25AE, OM-25ME, MaxBlend, MaxVenturi]
- **NewPort Medical** [e360 Vent, e500 Vent]
- **Viasys** [66045]

SENSOR CROSS REFERENCE

- **Analytical Industries** [PSR-11-917-J1]
- **Teledyne** [R29MED #C-70592]

► FiO₂ Sensors

12

MONTH
WARRANTY

MAX-250ESF
R115P85

PRIMARY APPLICATIONS

- **Maxtec** [MaxO₂+AE, OM-25AE, OM-25ME, MaxBlend, MaxVenturi]

SENSOR CROSS REFERENCE

- **Analytical Industries** [PSR-11-917-J1]
- **International Technologies** [M-25]

24

MONTH
WARRANTY

MAX-250TK
DC CONNECTOR
R125P11-001

PRIMARY APPLICATIONS

- **Viasys** [Vela Diamond Series, 16101]

SENSOR CROSS REFERENCE

- N/A

24

MONTH
WARRANTY

MAX-250K
PANDUIT CONNECTOR
R125P02-009

PRIMARY APPLICATIONS

- **Viasys** [Vela T2 (Older Models)]

SENSOR CROSS REFERENCE

- **Analytical Industries** [PSR-11-75-KE4]

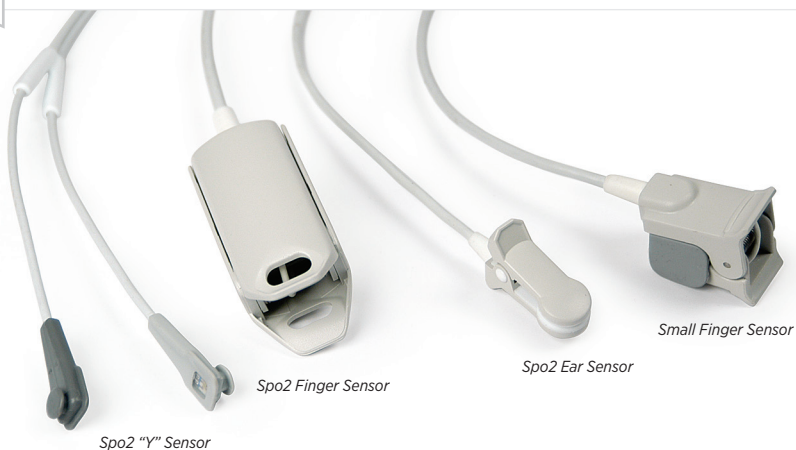
24

MONTH
WARRANTY

MAX-250S
R125P16-001

PRIMARY APPLICATIONS

- Extra Stable Sensor for **MAX-250** Applications



► Reusable Probes

Our SpO₂ sensors are compatible with most the commonly used oximeter systems and modules. The SpO₂ product family features unique product designs, easy patient applications and improved comfort. Our complete line of products are designed to be of the highest quality and affordably priced.

- Multi-site ("Y") probes (6 month warranty)
- Ear probes (6 month warranty)
- Soft, comfortable fit
- Compatible with most commonly used oximeter systems

AVAILABLE MODELS

Hewlett Packard®

Nellcor®

Ohmeda®

SpaceLabs®

Invivo®

Nonin®

SensorMedics®

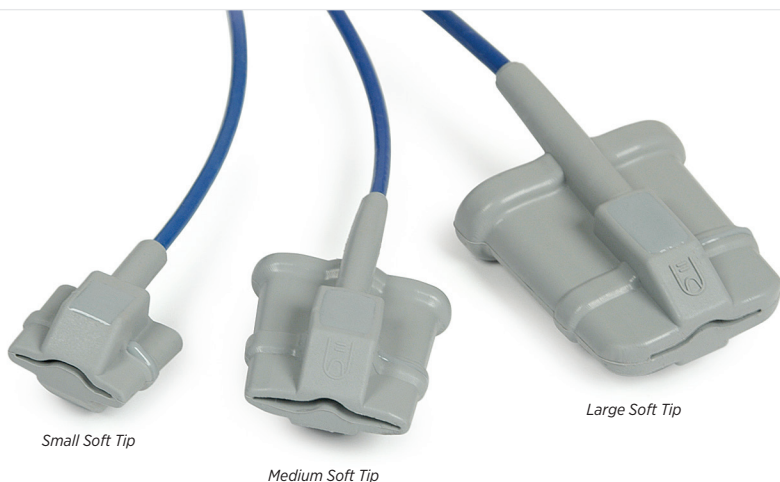
S & W®

Kontron®

Novamatrix®

Siemens®

**For a complete list of available models, visit our online cross-reference at www.maxtec.com*



► Soft Tip® Probes

Our line of Soft Tip Probes provide a long-term reusable solution for patient SpO₂ monitoring. The unique product design helps reduce false alarms and allows for easy cleaning by submersion in common hospital-grade disinfectants.

- Easy to clean
- Latex-free
- Soft, comfortable fit
- Compatible with most commonly used oximeter systems
- Sturdy, lightweight design with superior durability
- Available in three sizes

AVAILABLE MODELS

Novamatrix® Soft Tip

BCI® Soft Tip

HP® Soft Tip Nonin® Soft Tip

Ohmeda® Soft Tip

CSI® Soft Tip

Konica Minolta®

**For a complete list of available models, visit our online cross-reference at www.maxtec.com*



Adult



Pediatric



Infant



Neonate

► Disposable Probes

All disposable sensors feature a unique pre-aligned design that ensures accurate sensor placement and sensor functionality. The application tape maximizes patient comfort and allows for easy sensor repositioning. All disposable sensors come standard with Microfoam® tape (Medaplast tapes are available upon request).

- Comes in four sizes: adult, pediatric, infant and neonate
- Available in Microfoam and Medaplast adhesive styles
- Comes 24 per box
- Compatible with most commonly used oximeter systems
- Sturdy, lightweight design with superior durability

CARE AREAS

Respiratory Care

Recovery Room

Nursing

Cardiopulmonary Care

Emergency Transport

Emergency Room

Home Care

Fire Service Department

Anesthesia

Outpatient Care

Triage

Sleep Studies

**For a complete list of available models, visit our online cross-reference at www.maxtec.com*

*"Use Maxtec probes with
your patient monitor"*



Shown with Maxtec
Disposable Finger Probe



Interface Adapter

Allows Maxtec SpO₂
Probes To Be Used

► SpO₂ Interface Cables

The SpO₂ interface cables allow Maxtec disposable and reusable probes to be used with your most-common SpO₂ patient monitors. The 1.2M length provides additional reach that would be seen with other extension cables (90721CIP available in 2.4M length)..

- Easy to clean
- Latex-free
- Compatible with most commonly used oximeter systems
- Sturdy, lightweight design with superior durability

AVAILABLE MODELS

Mindray

CSI Criticare

Fukuda Kontron

Marquette

Mindray

Welch Allyn

Colin

Critikon

GE Crikon

Medtronic

Oridion

Covidien

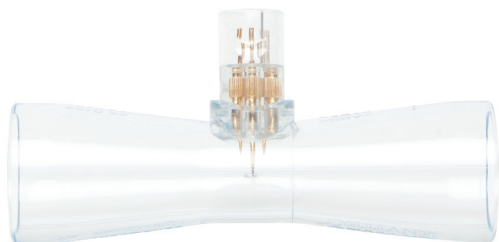
Datex

Mediana

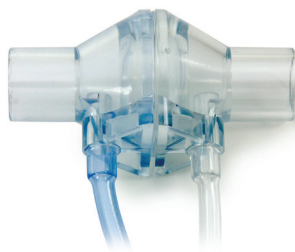
Mennen

Schiller

**For a complete list of available models, visit our online cross-reference at www.maxtec.com*



Spiroquant A+



Spiroquant H

► Flow Sensors

SPIROQUANT A+

Replacement for: Dräger [Narkomed, Fabius GS, Fabius, 6400, Babylog, Savina, Evita Family, Spirolog Sensor 8403735]

SPIROQUANT H

Replacement for: Hamilton [H72 VR-1, Galileo, Amadeus, Arabella, Aladdin Veolar, Raphael, Sensor H7400 AccuTach, 51254, 396008]

PART NUMBERS

Spiroquant A+ Flow Sensor R122P01

Spiroquant H Flow Sensor R122P04



ANALYSIS

OXYGEN ANALYZERS

SENSING.

▼
ANALYSIS.

DELIVERY.

*"Oxygen monitor with adjustable
alarms from 15% - 99%"*



► MaxO₂[®] ME Oxygen Monitor

The **MaxO₂ ME** was designed based upon years of feedback from our customers. We've added numerous features, however still managed to create an easy-to-use, low maintenance monitor. New features include a backlit LCD, smart alarms, DC power port, protective over-mold, built in kickstand, built-in dove tail, extended battery life, and is also backed by the Maxtec 24 month warranty.

- Large, backlit LCD
- Smart Alarms - auto set 3% +/- current reading
- Long battery life - up to 5,000 hours on 4 AA
- DC port, for use with optional power supply
- Built-in kickstand and dovetail
- External Max-550 O₂ sensor

PART NUMBERS

MaxO₂ ME Oxygen MonitorR230P01

MaxO₂ ME International R230P01-001

Accessories are **NOT included unless marked by a dotted border.*





► UltraMaxO₂

The **UltraMaxO₂** was designed for fast and easy verification of oxygen concentration, flow and outlet pressure of oxygen concentrators. Best of all, the **UltraMaxO₂** provides unparalleled performance and reliability from its advanced design that includes the following features and operational benefits.

- Accurately measure O₂, flow & pressure
- No oxygen sensor required
- No in-field calibration
- Self-diagnostics
- Shielded, reinforced sample gas inlet port
- Includes silicone case for increased durability
- 36 month warranty

PART NUMBERS

UltraMax R221P11

International R221P11-001



*"Patented ergonomic design
fits comfortably in your hand"*



► MaxO₂⁺A

The **MaxO₂⁺A** was designed with simplicity and portability in mind. This analyzer is ideal for checking oxygen percent accuracy in concentrators or when being paired with a Blender Buddy to verify delivered FiO₂.

- Internal MAX-250+ Long Life Sensor
- 5,000+ hours operation on 2 AA batteries
- Easy one touch calibration
- Patented ergonomic design fits comfortably in your hand
- Quickly adapts to bore tube applications

PART NUMBERS

MAXO₂⁺ R217P62

Accessories are **NOT included unless marked by a dotted border.*





*"Patented ergonomic design
fits comfortably in your hand"*



► MaxO₂⁺AE

The **MaxO₂⁺AE** is best used anywhere an inline analyzer is needed, when alarms are not deemed important. It is especially useful in conjunction with older ventilators or oscillators.

- Internal MAX-250+ Long Life Sensor
- 5,000+ hours operation on 2 AA batteries
- Easy one touch calibration
- Patented ergonomic design fits comfortably in your hand

PART NUMBERS

MaxO₂⁺AE R217P72

Accessories are **NOT included unless marked by a dotted border.*



MAX-250E
R125P03-002



15MM TEE ADAPTER
R16P02



FLOW DIVERTER
R110P10-001



DOVETAIL BRACKET
R217P23



POLE MOUNT
R206P75



TIGHT FIT CASE
R217P32



2.45"



3.20"



Lanyard Attachment

Protective Case

Easy Calibration

► Handi+

The **Handi+** is an affordable method for your oxygen analysis needs. The simple to use, one-touch calibration button, new overmold and calibration reminder, combined with the traditional **2-year warranty**, auto-off and size make it the best of its class. This analyzer is great for spot-checking O_2 percentage in hospitals, clinics, and in homecare environments.

- New and improved one-touch calibration
- Small, convenient and portable
- Overmold for extra protection
- Auto-off

PART NUMBERS

Handi+	R218P12	Handi+ (FlowCheck Adapter)	R218P12-005
Handi+N ₂	R218P05		

*Accessories are **NOT** included unless marked by a dotted border.



15MM TEE ADAPTER
R216P02



FLOW DIVERTER
R210P10-001



BARBED ADAPTER
R207P17



ANALYSIS

PULSE OXIMETRY

SENSING.

▼
ANALYSIS.

DELIVERY.

"User-friendly design"



► M800 Handheld Pulse Oximeter

The M800 Handheld Pulse Oximeter combines many popular features into one compact, user-friendly design. It is equipped with adjustable alarms and also provides visual indicators on a bright 2.4" OLED display. The M800 also features a gravity activated automatic display rotation for easy viewing in multiple orientations. This product is available from Maxtec with or without an optional rechargeable lithium-ion battery and cradle.

- Adjustable audible and visual alarms
- High resolution, multi-directional 2.4" color display
- Spot check and continuous monitoring modes
- Optional rechargeable lithium-ion battery & cradle
- Data storage capabilities

PART NUMBERS

M800 Pulse Oximeter R123P17
Adult SpO2 Finger Probe..... R123P22-001

Pediatric SpO2 Finger Probe R123P22-002
Neonatal SpO2 Finger Probe..... R123P22-003

*"The inexpensive,
accurate pulse oximeter
that you've been looking for"*



► MD300 C2 Pulse Oximeter

*The Choice Med **MD300 C2** is a great addition to the line of pulse oximeters offered by Maxtec. Its compact design allows it to be used for adult applications in many different areas such as hospital, homecare and EMS. This innovative technology is an excellent source for the inexpensive, accurate pulse oximeter that you've been looking for.*

- Includes protective rubber case
- Bright, 6-way OLED color display
- Auto-off function (after 8 seconds of no use)
- Adjustable 10 level brightness
- Convenient, compact & portable
- Displays SpO₂, heart rate & waveform
- 30 hrs of use on two AAA-size batteries
- Adjustable brightness

PART NUMBERS

MD300 C2 Pulse Oximeter R204P23

*"Exceptional quality & performance
in a small robust design"*



► MD300 C63 Pulse Oximeter

The all-new **MD300 C63** spot-check pulse oximeter provides exceptional quality and performance in a small, robust design. This model includes new advanced features like a shockproof design, finger skid resistance and automatic compensation for infrared signal interference. This unit is suitable for use in hospitals, home care and even during exercise.

- Dual color OLED six-way display
- Displays SpO₂, PR, Pulse Bar & Pleth
- Fits pediatric to adult
- Shockproof design
- Low power consumption; auto-off
- Adjustable brightness
- Small, lightweight design
- Finger skid resistance

PART NUMBERS

MD300 C63 Pulse Oximeter R204P27



*“Exceptional quality & performance
in a small robust design”*



► MD300 C29 Pulse Oximeter

The use of a pulse oximeter is a very important and common way to check oxygen saturation (SpO2) and pulse rate. The MD300 C29 is a compact, simple, and durable monitoring device.

- Dual color OLED six-way display
- Displays SpO₂, PR, Pulse Bar & Pleth
- Brightness level is adjustable
- 6 display modes
- Uses standard AAA-size batteries
- Automatic power off
- FDA Certified

PART NUMBERS

MD300 C29 Pulse Oximeter R204P28



DELIVERY

MIXERS AND BLENDERS

*"Three-in-one blender, o₂ monitor,
and flow meter"*

Dual-Scale
DFB Flow Meter
w/ Back Light



Easy-To-Use
Smart Alarms



Available with
Right-Side Dual Scale
Flow Meter



► MaxBlend™ 2

The **MaxBlend 2** was designed based upon years of feedback from our customers. We've added numerous features, however still managed to create an easy-to-use, low maintenance blender. New features include a backlit LCD, backlit acrylic flow meter, smart alarms, DC power port, extended battery life, and is also backed by the **Maxtec 24 month warranty**.

- High Flow and Low Flow Models
- ON / OFF Bleed Control
- 15%-99% Alarm Parameters
- Dual Scale Flow Meter
- DC Power Port, for Optional Power Supply
- Smart-Alarms

PART NUMBERS

0-3 LPM Flow Meter, DISS Connector R229P01-011

0-30 LPM Flow Meter, DISS Connector . . . R229P01-001

0-15 LPM Flow Meter, NIST Connector . . . R229P01-027

0-70 LPM Flow Meter, DISS Connector . . . R229P02-001

0-15 LPM Flow Meter, DISS Connector . . . R229P01-010

0-3 LPM Flow Meter, NIST Connector . . . R229P01-030

0-30 LPM Flow Meter, NIST Connector . . . R229P01-004

0-70 LPM Flow Meter, NIST Connector . . R229P02-004

Accessories are **NOT included unless marked by a dotted border.*



MAX-550E
R140P02



POLE MOUNT
R100P26



RAIL MOUNT
R100P09



2 - IN - 1 MUFFLED
R219P50-001

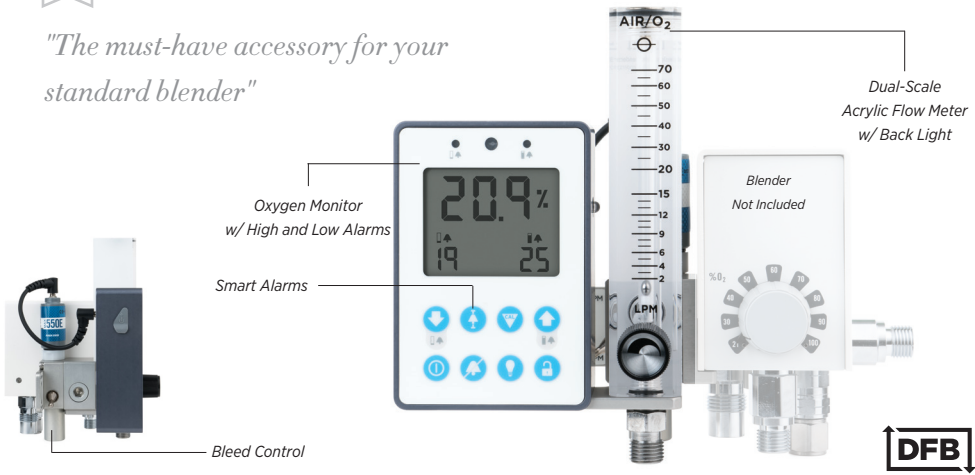


COILED HOSE
R129P01



POWER SUPPLY
R230P10

"The must-have accessory for your standard blender"



► MaxBlend™ Lite

The **MaxBlend Lite** was designed to provide all of the features of our **MaxBlend 2** to customers already using a stand-alone blender. When paired with an existing blender, the **MaxBlend Lite** provides it's users with the added features of a built-in O₂ monitor with high and low alarms, and a flow meter. This product securely attaches to your blender using a specific independent adapter block.

- Available For Most Common Blenders
- High Flow and Low Flow Models
- ON / OFF Bleed Control
- Combine to create a three-in-one blender
- Multiple DFB flow meter configurations
- 15%-99% Alarm Parameters
- DC Power Port, for Optional Power Supply
- Large, backlit LCD

PART NUMBERS

Low Flow, MaxBlend Lite, 3 LPM R229P03-001

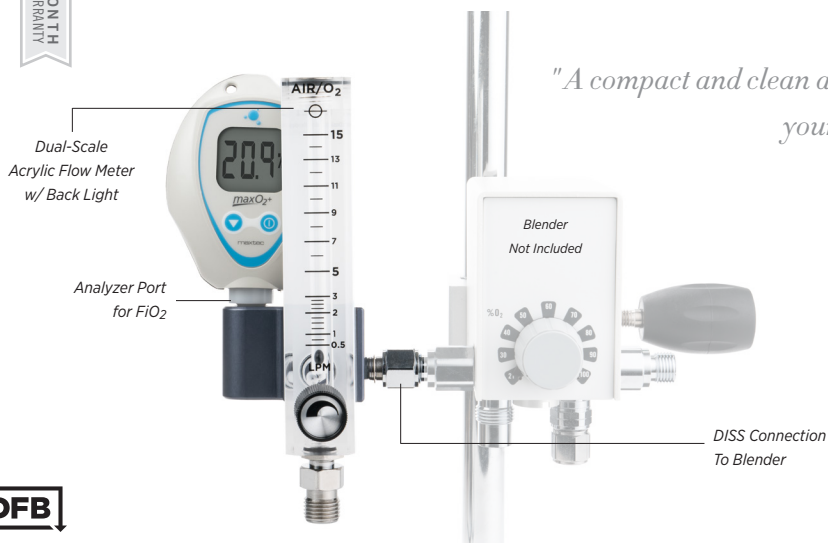
Low Flow, MaxBlend Lite, 30 LPM R229P03-003

Low Flow, MaxBlend Lite, 15 LPM R229P03-002

High Flow, MaxBlend Lite, 70 LPM R229P03-004

*Accessories are **NOT** included unless marked by a dotted border.





*"A compact and clean addition to
your blender"*

► BlenderBuddy 2

The **BlenderBuddy 2** turns your blender into the ultimate blending device. Its robust design provides quality and reliability needed to ensure the ultimate patient care. This product securely attaches to your blender using its DISS outlet connection. The oxygen port on the top of the manifold allows gas to be analyzed in a clean and dry environment away from the patient to avoid cross-contamination.

- Robust blender extension with a Maxtec DFB Flow Meter
- Includes an analyzer port for accurate FiO_2 readings
- Comes standard with a Maxtec Dual Scale DFB Flow Meter
- Other configurations available at www.maxtec.com

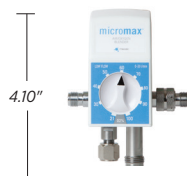
PART NUMBERS

Blender Buddy 2, DFB, 3 LPM.....R233P01-001

Blender Buddy 2, DFB, 30 LPM..... R233P01-003

Blender Buddy 2, DFB, 15 LPM.....R233P01-002

Blender Buddy 2, DFB, 70 LPM.....R233P01-004



► MicroMax™ MicroBlender

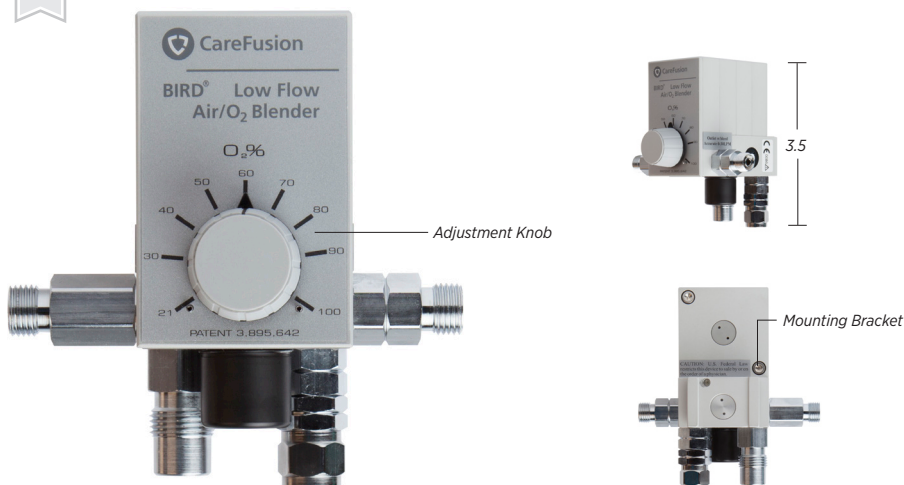
The **Micromax** MicroBlender features delivery of accurate FiO_2 mixtures from two outlet ports and has an overall flow range of 15-120 LPM (High Flow) and 3-30 LPM (Low Flow). Maximum combined flows are greater than or equal to 120 LPM (High Flow) and 30 LPM (Low Flow). When equipped with the Maxtec Blender Buddy, the **Micromax** provides users with a complete mixing package complete with a blender, two flow meters and an oxygen analyzer (sold separately).

- High Flow and Low Flow Models
- ON/OFF Bleed Control
- Available with Blender Buddy
- Unique, Durable and Versatile
- Includes Universal Mounting Bracket

PART NUMBERS

Low Flow [DISS] fittings R203P13
 Low Flow [NIST] fittings R203P13-001
 Low Flow [DISS] w/ Blender Buddy R203P13-002
 Low Flow [NIST] w/ Blender Buddy R203P13-003

High Flow [DISS] fittings R203P14
 High Flow [NIST] fittings R203P14-001
 High Flow [DISS] w/ Blender Buddy R203P14-002
 High Flow [NIST] w/ Blender Buddy R203P14-004



► Bird® MicroBlender

The versatile **3800™ Microblender** features delivery of accurate FiO_2 mixtures from two outlet ports and has an overall flow range of 2-120 LPM, making it ideal for use with ventilators while providing flows to a flowmeter or Blender Buddy. It can also be used as a stand-alone device for mask CPAP, nasal cannula and resuscitation bags.

The **Low Flow** is perfect for air, ground and in-house transports as well as infant applications. The Low Flow range is 3-30 LPM or 0-30 LPM with a bleed.

- Accurately delivers FiO_2 Mixtures
- High Flow range of 2-120 LPM
- Low Flow range of 3-30 LPM (0-30 w/bleed)
- Discount when purchased w/ a Blender Buddy

PART NUMBERS

High Flow w/ DISS fittings.....	R219P25	High Flow w/ NIST fittings.....	R219P25-001
Low Flow w/ DISS fittings.....	R219P24	Low Flow w/ NIST fittings.....	R219P24-001



► MaxFLO₂ Mini

The **MaxFLO₂ Mini** is an affordable method for mixing and monitoring air and oxygen. The **MaxFLO₂ Mini** is a great alternative flow-driver for heated high flow therapy. Each unit comes equipped with dual flow meters, and a built-in pole mount to easily secure to a 1" pole.

- Flow & FiO₂ control all in one
- Pole mount included
- DISS outlet with 2-in-1 muffled adapter
- Quiet operation for minimal patient stimulation

PART NUMBERS

High Flow MaxFLO₂ Mini R223P08



15' COILED HOSE
R129P02



10' COILED HOSE
R129P01



2 - IN - 1 ADAPTER
R219P50-001



HANDI+ ANALYZER
R218P12

"Mix ambient air with oxygen"



► MaxVenturi®

Now Available with 120LPM Flow Meter for Expanded Flow Ranges! The **MaxVenturi** has been specially designed to interface with high flow humidification systems. Using the well established venturi principle, this unit provides users with the ability to mix ambient air and oxygen without the need for piped medical grade air. This is the perfect solution for adult high flow therapy in almost any environment.

- Flow & FiO₂ control all in one
- All-in-one O₂/air mixer
- Long battery life on analyzer (approx 5,000 hrs)
- Mix ambient air and O₂ (No medical piped air needed)
- Built-in pole clamp
- Easy to titrate
- Two year O₂ sensor warranty

Updated Applications

- High flow therapy for trach patients
- Compatible with common aerosol mask applications
- Alternative conventional mixed gas delivery while moving entrainment away from patient

► Part Numbers

MAXVENTURI WITH STANDARD POLE MOUNT (POLE MOUNT)

MaxVenturi w/ Pole Mount & DISS Fittings	R211P03-020
MaxVenturi w/ Pole Mount & NIST Fittings	R211P03-021
MaxVenturi International w/ Pole Mount & DISS Fittings	R211P03-022
MaxVenturi International w/ Pole Mount & NIST Fittings	R211P03-023

MAXVENTURI WITH LOCKING POLE MOUNT (LOCKING POLE MOUNT)

MaxVenturi w/ Locking Pole Mount & DISS fittings	R211P03-024
MaxVenturi w/ Locking Pole Mount & NIST fittings	R211P03-025
MaxVenturi International w/ Locking Pole Mount & DISS fittings	R211P03-026
MaxVenturi International w/ Locking Pole Mount & NIST fittings	R211P03-027

MAXVENTURI HIGH FLOW 120LPM

MaxVenturi w/ DISS & Pole Mount	R211P39-001
MaxVenturi w/ NIST & Pole Mount	R211P39-002
MaxVenturi w/ DISS & Locking Pole Mount	R211P39-003
MaxVenturi w/ NIST & Locking Pole Mount	R211P39-004

NOW AVAILABLE 120LPM FLOW METER

- For patients with higher inspiratory demands
- Compatible with common mask applications



*Accessories are **NOT** included unless marked by a dotted border.





"Designed to reduce noise, which is commonly associated with high flow therapy"

Attaches Directly
to Filter



Noise Dampening
Foam Core

► MaxVenturi Muffler

The **MaxVenturi®** Muffler is designed to reduce noise, which is commonly associated with high flow therapy. This noise-reducing accessory is aimed towards increasing patient comfort during treatment. At Maxtec, it is our goal to provide innovative products that are designed to improve life for both the clinician and the patient.

- Reduces noise by approximately 5x

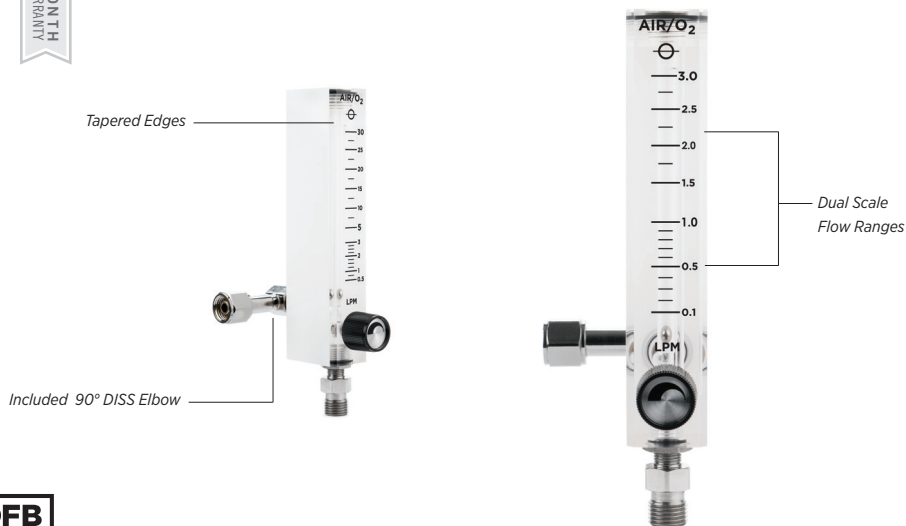
PART NUMBERS

MaxVenturi Muffler R211P38



DELIVERY

FLOW METERS



► DFB Flow Meters *(Designed For Blenders)*

The **Maxtec “DFB” flow meters** are specifically designed to work with blenders, which until now, is unheard of in the industry. These **DFB flow meters** are calibrated for the pressure drop that is associated with a blender as flow rates are increased. This is especially important in the world of high flow.

Every **Maxtec DFB flow meter** has a dual-scale, which essentially combines 2 flow ranges into 1 flow meter. Our Dual Taper allows accuracy from the lowest visible ranges, to higher flows. This eliminates the need for multiple flow meters attached to a blender, which means your blender setup will take less real estate, leaving room for more equipment.

- Designed For Blenders - DFB
- Standard DISS outlet
- Tapered Edges
- Lifetime warranty on housing & flow tube; 5-year warranty on needle valves
- Two-in-one Flow Ranger
- Durable, Acrylic Housing
- Standard DISS outlet

PART NUMBERS

DFB Flow Meter, 0-3 LPM w/ Elbow R219P99-400

DFB Flow Meter, 0-30 LPM w/ Elbow R219P88-400

DFB Flow Meter, 0-15 LPM w/ Elbow R219P79-400

DFB Flow Meter, 0-70 LPM w/ Elbow R219P87-400



► Flow Meters

Maxtec's line of flow meters provide a durable, accurate and dependable solution to delivering precise amounts of flow.

- Durable, polycarbonate housing
- Standard DISS outlet
- 5-year warranty on needle valves
- Highly accurate needle valve
- Lifetime warranty on housing & flow tube

PART NUMBERS

0 - 15 LPM Flow Meter RP34P03-001

0 - 1 LPM Flow Meter RP34P03-004

0 - 70 LPM Flow Meter RP34P03-006

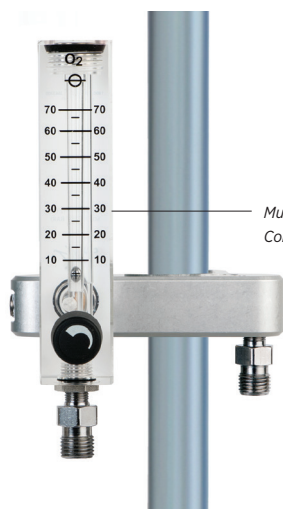
2 - 26 LPM Flow Meter RP34P03-008

0 - 200cc Flow Meter RP34P03-003

0 - 8 LPM Flow Meter RP34P03-005

0 - 3.5 LPM Flow Meter RP34P03-007

0 - 5 Flow Meter RP34P03-009



*"Mount your flow meter
configuration to a pole"*

Multiple Flow Meter
Configurations Available

► O₂ Flow Meter Manifold

Maxtec's new **Flow Meter Manifold** allows for fast and easy attachment of a flow meter to an IV pole. Every flow meter features a durable housing, a highly accurate needle valve and is covered by a 5 year warranty. Each flow range is also available in an option for ISO colors (white).

- Quickly mount flowmeters with ease
- Highly accurate needle valve
- Lifetime warranty on housing & flow tube
- Durable, acrylic housing
- ISO colored flow control knobs available
- 5-year warranty on needle valves

COMMON PART NUMBERS

IV Pole Manifold, DISS, 0-70LPM R220P01-109
IV Pole Manifold, NIST, 0-70LPM R220P01-111
IV Pole Manifold, AUST, 0-70LPM. R220P01-109

IV Pole Manifold, NIST, 0-30LPM. R220P07-003
IV Pole Manifold, DISS, 0-30LPM R220P07-001
IV Pole Manifold, NIST, 0-30LPM. R220P07-003

For Additional Part Numbers Visit:
www.maxtec.com/product-category/delivery/flow-meters

► Custom Fittings

OHMEDA QUICK CONNECTS

0 - 15 w/ Ohmeda Quick ConnectR302P01
 0 - 1 w/ Ohmeda Quick Connect R302P04
 0 - 3.5 w/ Ohmeda Quick Connect R302P07
 0 - 5 w/ Ohmeda Quick Connect R302P09

0 - 200cc w/ Ohmeda Quick ConnectR302P03
 0 - 70 w/ Ohmeda Quick ConnectR302P06
 2 - 26 w/ Ohmeda Quick Connect.....R302P08

CHEMTRON QUICK CONNECTS

0 - 15 w/ Chemtron Quick ConnectR303P01
 0 - 1 w/ Chemtron Quick Connect R303P04
 0 - 3.5 w/ Chemtron Quick Connect R303P07
 0 - 5 w/ Chemtron Quick Connect..... R303P09

0 - 200cc w/ Chemtron Quick Connect.....R303P03
 0 - 70 w/ Chemtron Quick ConnectR303P06
 2 - 26 w/ Chemtron Quick ConnectR303P08

PURITAN QUICK CONNECTS

0 - 15 w/ Puritan Quick Connect.....R304P01
 0 - 1 w/ Puritan Quick Connect..... R304P04
 0 - 3.5 w/ Puritan Quick Connect..... R304P07
 0 - 5 w/ Puritan Quick Connect R304P09

0 - 200cc w/ Puritan Quick ConnectR304P03
 0 - 70 w/ Puritan Quick Connect.....R304P06
 2 - 26 w/ Puritan Quick Connect.....R304P08

SCHRADER QUICK CONNECTS

0 - 15 w/ Schrader Quick ConnectR305P01
 0 - 1 w/ Schrader Quick Connect..... R305P04
 0 - 3.5 w/ Schrader Quick Connect R305P07
 0 - 5 w/ Schrader Quick Connect..... R305P09

0 - 200cc w/ Schrader Quick Connect.....R305P03
 0 - 70 w/ Schrader Quick ConnectR305P06
 2 - 26 w/ Schrader Quick ConnectR305P08

INTERNATIONAL (WHITE KNOBS)

0 - 15 w/ White KnobRP34P03-101
 0 - 1 w/ White Knob RP34P03-104
 0 - 70 w/ White Knob..... RP34P03-106
 2 - 26 w/ White Knob..... RP34P03-108
 0 - 15 w/ White Knob 60psi RP34P03-111

0 - 200cc w/ White Knob..... RP34P03-103
 0 - 8 w/ White KnobRP34P03-105
 0 - 3.5 w/ White Knob..... RP34P03-107
 0 - 5 w/ White KnobRP34P03-109
 0 - 70 w/ White Knob 60psi RP34P03-116

DISS HAND TIGHT FITTINGS

0 - 15 w/ DISS Hand Tight Fittings.....R306P01
 0 - 200cc w/ DISS Hand Tight Fittings..... R306P03
 0 - 70 w/ DISS Hand Tight Fittings R306P05
 0 - 5 w/ DISS Hand Tight Fittings R306P07

0 - 3.5 w/ DISS Hand Tight FittingsR306P02
 0 - 1 w/ DISS Hand Tight FittingsR306P04
 2 - 26 w/ DISS Hand Tight Fittings.....R306P06



2 - IN - 1 ADAPTER
R219P32



3 - IN - 1 ADAPTER
R219P31



2 - IN - 1 MUFFLED
R219P50-001

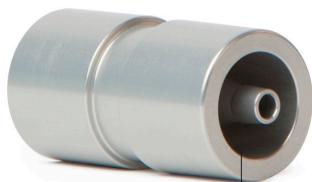


DELIVERY

VENT, BLEND & FLOW SUPPORT



“Designed specifically for use with multiple sizes of medical tubing”



22mm Large Bore
15mm Tubing
¼" Cannula Tubing

► 3-in-1 Adapter

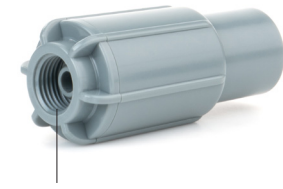
The **3-in-1 Adapter** is designed specifically for use with multiple sizes of commonly used medical tubing. It provides the user with the option to connect 22mm Large Bore, 15mm or ¼" Cannula tubing to a device or outlet with a DISS fitting. A 2-in-1 style is available for High Flow applications (22mm and 15mm connection only).

- Up to three connections in a single reusable connector
- Connects Large Bore (22mm), Small Bore (15mm) & ¼" Cannula to any DISS fitting
- 2-in-1 option for High Flow applications available (22mm & 15mm)
- Made from machined aluminum

PART NUMBERS

3-in-1 Single Pack R219P31 2-in-1 Single Pack R219P32

*“Dampens noise minimizing
patient stimulation during use”*



DISS Threaded
Connection



22mm Large Bore
15mm Tubing

► 2-in-1 Muffled Adapter

The **2-in-1 Muffled Adapter** is designed specifically for use with multiple sizes of commonly used medical tubing. It provides users with the option to connect 22mm large bore or 15mm small bore tubing to any device with a male DISS fitting such as common flow meters.

- Connects Large Bore (22mm) and Small Bore (15mm) tubing to any DISS fitting
- Dampens noise minimizing patient stimulation during use
- Specially designed for High Flow applications

PART NUMBERS

2-in-1 Muffled Single (1) PackR219P50-100

*“High-grade polyurethane material,
keep the work space clean & tidy”*



Meets NFPA 99 Standard
for manufactured assemblies



DISS fittings &
Quick Connects Available

► Coiled Air/O₂ Hoses

Maxtec offers unique oxygen and self-coiling hoses. They are available in both single and dual coils with blender, ventilator or DISS fittings as well as quick connect fitting options.

- Easy to move with equipment
- DISS fittings (handtight & hextight)
- Self coiling prevents touching the ground
- Meets NFPA 99 standard for manufactured assemblies

DISS COILED HOSE PART NUMBERS

15' Single Coiled O ₂ Hose	R127P35
15' Single Coiled Air Hose	R128P34
10' Dual Blender Hose (DISS)	R129P01
15' Dual Vent Hose (DISS female)	R129P02
10' Dual Vent Hose (DISS female)	R129P02-001
10' Dual Vent Hose (Ohmeda Quick Connects)	R129P13
15' MaxFLO ₂ Dual Air & O ₂ Hose (DISS Right Angle)	R129P15
10' MaxFLO ₂ Dual Air & O ₂ Hose (DISS Right Angle)	R129P16

► Part Numbers



OHMEDA
Quick Connect

WITH OHMEDA QUICK-CONNECT FITTINGS

15' Single Coiled O ₂ Hose w/ Ohmeda QC	R127P37
15' Single Coiled Air Hose w/ Ohmeda QC	R128P37
15' Dual Coiled Hose w/ Ohmeda QC	R129P21
10' Dual Coiled Hose w/ Ohmeda QC (Blender Hose)	R129P17
6' Straight Dual Hose w/ Ohmeda QC	R129P50
6' Straight O ₂ Hose w/ Ohmeda QC	R129P60
6' Straight air Hose w/ Ohmeda QC (Yellow Hose)	R129P70
6' Straight Dual Hose w/ Ohmeda QC (Blender Hose)	R129P54



CHEMTRON
Quick Connect

WITH CHEMTRON QUICK-CONNECT FITTINGS

15' Single Coiled O ₂ Hose w/ Chemtron QC	R127P38
15' Single Coiled Air Hose w/ Chemtron QC	R128P38
15' Dual Coiled Hose w/ Chemtron QC	R129P22
10' Dual Coiled Hose w/ Chemtron QC	R129P18
10' Dual Coiled Hose w/ Chemtron QC (Blender Hose)	R129P25
6' Straight Dual Hose w/ Chemtron QC	R129P51
6' Straight O ₂ Hose w/ Chemtron QC	R129P61
6' Straight air Hose w/ Chemtron QC (Yellow Hose)	R129P71
6' Straight Dual Hose w/ Chemtron QC (Blender Hose)	R129P55



PURITAN
Quick Connect

WITH PURITAN QUICK-CONNECT FITTINGS

15' Single Coiled O ₂ Hose w/ Puritan QC	R127P39
15' Single Coiled Air Hose w/ Puritan QC	R128P39
15' Dual Coiled Hose w/ Puritan QC	R129P23
10' Dual Coiled Hose w/ Puritan QC	R129P19
10' Dual Coiled Hose w/ Puritan QC (Blender Hose)	R129P26
6' Straight Dual Hose w/ Puritan QC	R129P52
6' Straight O ₂ Hose w/ Puritan QC	R129P62
6' Straight air Hose w/ Puritan QC (Yellow Hose)	R129P72
6' Straight Dual Hose w/ Puritan QC (Blender Hose)	R129P56



SCHRADER
Quick Connect

WITH SCHRADER QUICK-CONNECT FITTINGS

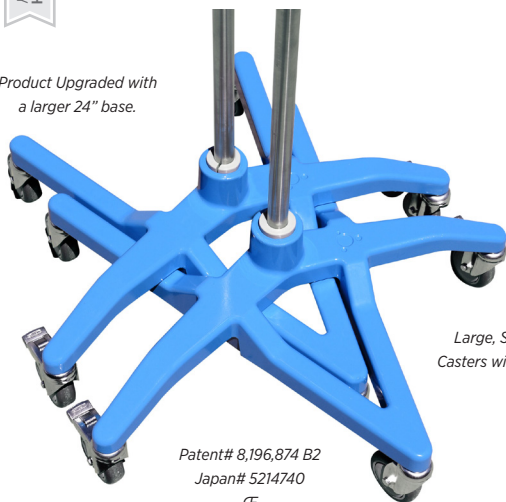
15' Single Coiled O ₂ Hose w/ Puritan QC	R127P40
15' Single Coiled Air Hose w/ Puritan QC	R128P40
15' Dual Coiled Hose w/ Puritan QC	R129P24
10' Dual Coiled Hose w/ Puritan QC	R129P20
10' Dual Coiled Hose w/ Puritan QC (Blender Hose)	R129P27
6' Straight Dual Hose w/ Puritan QC	R129P53
6' Straight O ₂ Hose w/ Puritan QC	R129P63
6' Straight air Hose w/ Puritan QC (Yellow Hose)	R129P73
6' Straight Dual Hose w/ Puritan QC (Blender Hose)	R129P57



DELIVERY

PATIENT CARE STANDS

Product Upgraded with
a larger 24" base.



Patent# 8,196,874 B2

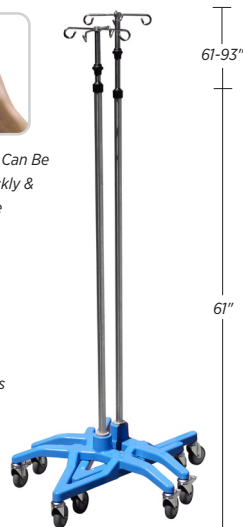
Japan# 5214740

CE



The Pole Height Can Be
Adjusted Quickly &
with Ease

Large, Smooth Rolling
Casters with 2 Wheel Locks



▶ SmartStack™ Patient Care Stand

The All-New 24" **SmartStack** patient care stand from Maxtec is what you have been waiting for. Our specially designed 24" pole base is two inches wider and nearly 5 pounds heavier, providing extra stand support and durability. It's patented design will stack neatly with other bases of it's kind (22" and 24"), allowing for extra storage space, a more organized facility and easy transportation of multiple stands all at once.

- ▶ Patented stacking design with taller outer tube
- ▶ Large, 3" smooth rolling casters with 2 wheel locks
- ▶ Includes 4 fixed Ram-horn hooks
- ▶ 100 lbs max load capacity

PART NUMBERS

SmartStack Single-Pack R100P49-001

SmartStack Eight-Pack (6 minimum) . . . R100P49-008



BASKET 1.0"
R105P17



SINGLE TANK HOLDER
R105P04



DUAL TANK HOLDER
R105P04-001

More accessories available on **page 89**

SENSING.

ANALYSIS.

DELIVERY.



Large, Smooth Rolling
Casters with 2 Wheel Locks

Includes 1.75" Pole Mount
Basket



▶ SmartStack™ Equipment Stand

ALL-NEW! Maxtec is pleased to introduce the **SmartStack** nesting universal equipment stand. **SmartStack** Nesting Design: The patented design will stack neatly with other bases of its kind, allowing for extra storage space, a more organized facility and easy transportation of multiple stands all at once.

- ▶ Patented stacking design
- ▶ Large, smooth rolling casters with 2 wheel locks
- ▶ Includes basket for additional storage
- ▶ Heavy duty aluminum mounting plate

PART NUMBERS

SmartStack Stand w/ Universal Plate R100P86

¹SmartStack Stand for Devilbiss® R100P74

²SmartStack Stand for Respironics R100P73



BASKET 1.75"
R10SP17-001

¹This SmartStack Equipment Stand was designed for use with DeVilbiss' IntelliPAP®, BiPAP & CPAP units with humidifier attached.

²This SmartStack Equipment Stand was designed for use with Respironics, REMstar, System One, BiPAP & CPAP units.



NEONATAL & PEDIATRIC CARE

SENSING.

ANALYSIS.

DELIVERY.

SENSING.

ANALYSIS.

DELIVERY.



Eye Pad For
UV Protection



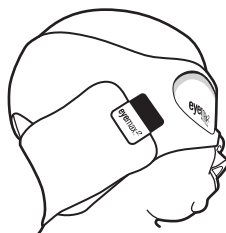
REGULAR (12.6" - 14.9")
(Occipital Frontal Circumference)



PREEMIE (10.4" - 12.6")
(Occipital Frontal Circumference)



MICRO (7.87" - 10.4")
(Occipital Frontal Circumference)



► EyeMax 2™

Our **EyeMax2** was designed based on valuable feedback from our customers. We have improved our design to assure optimum comfort and protection for patients during phototherapy treatment.

- Easy-to-use design
- Adjustable band for a perfect fits
- Bigger eye pad for less pressure and better UV protection
- Latex-Free

PART NUMBERS

EyeMax2 Regular..... R300P01

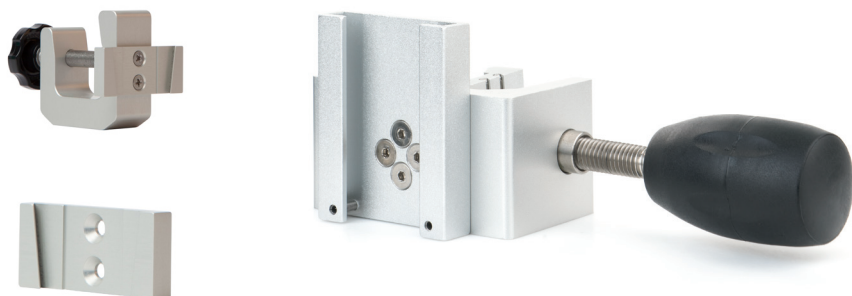
EyeMax2 Premie.....R300P02

EyeMax2 Micro.....R300P03



BRACKETS & ACCESSORIES

*"Heavy-duty aluminum brackets
are dependable and durable"*



► Brackets



ANALYZER WALL MOUNT
R205P86



MAXO2+ DOVETAIL
R217P23



ANALYZER POLE MOUNT
R206P75



HORIZONTAL ANALYZER
POLE MOUNT
R206P76



ANALYZER RAIL MOUNT
R100P10



MAXBLEND RAIL MOUNT
R100P09



MAXBLEND WALL MOUNT
R05P09



MAXBLEND POLE MOUNT
R100P26



MAXBLEND ADJUSTABLE
POLE MOUNT
R100P22



MAXO2 VENT POLE
MOUNT
R100P03



OSCILLATOR BRACKET
R102P10



LOCKING POLE CLAMP
R100P41



AEROGEN POLE MOUNT
R100P64



AEROGEN RAIL MOUNT
R100P68



HUMIDIFIER POLE MOUNT
R100P44



DOVETAIL BRACKET
R212P95-005

*“Dependable accessories for
ultimate space savings”*



► I.V. Pole Accessories



BASKET 1.0"
R105P17



BASKET 1.75"
R105P17-001



SINGLE TANK HOLDER
R105P04



DUAL TANK HOLDER
R105P04-001



*“Accessories that will
make your job easier”*



► Flow Diverters, Adapters & Misc.



FLOW DIVERTER
R110P10-001



15MM TEE ADAPTER
RP16P02



BARBED ADAPTER WITH
TUBING
R207P17



TIGHT FIT CASE
R217P32



POWER SUPPLY
R230P10



POWER SUPPLY
RP12P13



10' COILED HOSE
R129P01



15' SINGLE HOSE
R127P35

SENSING. ANALYSIS. DELIVERY.



2305 South 1070 West | Salt Lake City, Utah | 84119
800.748.5355 (toll free) | 801.266.5300 (international) | 801.973.6090 (fax)
www.maxtec.com

Maxtec is not affiliated nor endorsed by Analytical Industries, Bird, Ohmeda, Siemens, Drager, F&P, Sechrist, BioMed, Ohio, Impact, Adam, GE, Paragon, Penlon, Teledyne, Teleflex, MSA, Vovidien/PB, Versamed Vent, CSI Criticare, Choice Med, Konica Minolta, PROFOX, Nellcor, Novamatrix, BCI, HP, Datex, EnviteC, Nonin, S&W, Kontron, SensorMedics, SpaceLabs, Hamilton, Provita, Wright
ML#234, REV. F