

ALL PRODUCT SPECIFICATIONS ARE APPLICABLE AT STANDARD CONDITIONS:  
1013 MILLIBAR, 25°C DRY AIR, 50% RH.

1. Operation:
  1. Temperature: 0 to 50° C
  2. Pressure Range: 750 to 1250 hPa
  3. Humidity Range: 5 to 98% RH
2. Storage Temperature Range:
  - 5 to 25° C Recommended
  - 10 to 55° C
3. Range of Measurement:
  - 0 to 5000 ppm
4. Linearity Error:
  - ± 3% from 0 to 2,000 ppm
  - ± 5% over 2,000 ppm to full scale
5. 90% Response Time:
  - < 5 s
6. Repeatability:
  - ± 2% of signal, minimum of 20 ppm absolute
7. Drift:
  - < 5% of signal per annum
8. Output Signal:
  - 45 to 75 nA/ppm

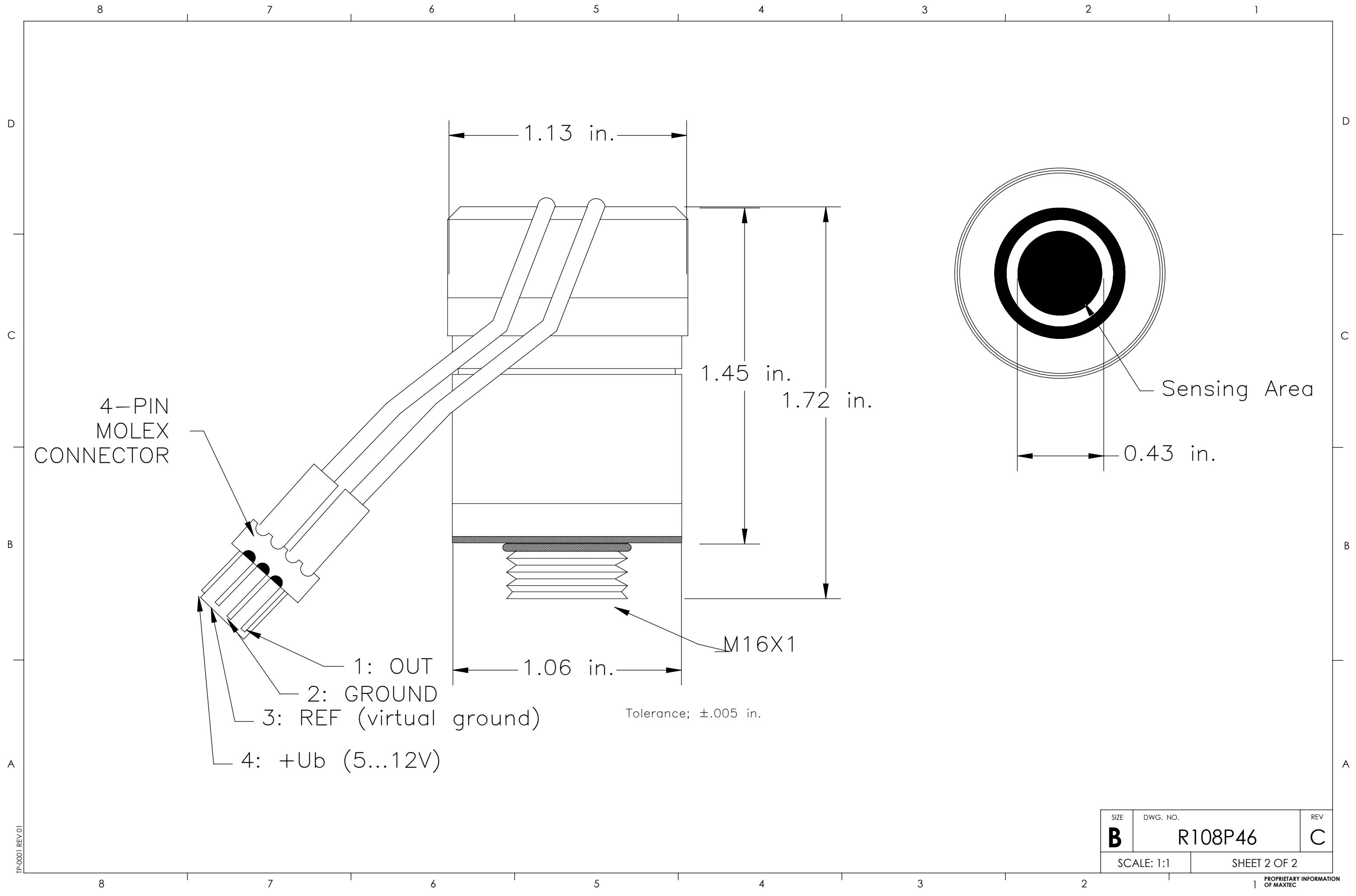
9. Interferences:
  - ± 20 ppm NO response to:
  - 16% CO<sub>2</sub> balance N<sub>2</sub>
  - 10% CO balance N<sub>2</sub>
  - 100% noble gases
  - 3,000 ppm C<sub>3</sub>H<sub>8</sub> balance N<sub>2</sub>
  - 75 ppm H<sub>2</sub>S balance N<sub>2</sub>
  - 75 ppm SO<sub>2</sub> balance N<sub>2</sub>
  - 1,000 ppm Benzene balance N<sub>2</sub>
10. Recommended Load:
  - 10 Ohm
11. Electrical Interface:
  - 4-pin Molex Connector on wire
12. Gas Connector:
  - M16 X 1

Released

TP-0001 REV 01

REVISION DETAIL UPDATE DRAWING FOR PRODUCT REINSTATEMENT		<b>mextec</b> ® SALT LAKE CITY, UTAH		<b>SPECIFICATION, MAX-321A NITRIC OXIDE AUTOMOTIVE SENSOR</b>	
UNLESS OTHERWISE SPECIFIED DIMENSIONS ARE IN INCHES AND PER ASME Y14.5-2009		.XX = ± .01    ANGLES ± 0° 30' .XXX = ± .005 .XXXX = ± .002		SIZE <b>B</b>	DWG. NO. <b>R108P46</b>
DRAWN BY: <b>Z. HANSEN</b>	DATE: <b>10/31/18</b>	SCALE: 1:1		SHEET 1 OF 2	

Released



TP-0001 REV 01

SIZE	DWG. NO.	REV
<b>B</b>	R108P46	<b>C</b>
SCALE: 1:1		SHEET 2 OF 2

PROPRIETARY INFORMATION OF MAXTEC