

ALL PRODUCT SPECIFICATIONS ARE APPLICABLE AT STANDARD CONDITIONS:  
 1013 MILLIBAR, 25° C DRY AIR, 50% RH.

- |  |   |
|--|---|
| <p>1. Bias Voltage:<br/>+ 300 mV ±25 mV</p> <p>2. Operation:<br/>         1. Temperature: 0° – 50° C<br/>         2. Pressure Range: 750 – 1250 hPa<br/>         3. Humidity Range: 10 – 98% RH</p> <p>3. Storage Temperature Range:<br/>         –20° to 60° C maximum<br/>         5° to 25° C Recommended</p> <p>4. Range of Measurement (Full Scale):<br/>         0 to 500 ppm</p> <p>5. Zero Offset Current:<br/>         &lt; 1 ppm</p> <p>6. 90% Response Time:<br/>         &lt;15 s</p> <p>7. Sensitivity:<br/>         500 nA/ppm to –1500 nA/ppm</p> <p>8. Drift:<br/>         &lt;10% signal/year</p> | <p>9. Maximum Overload:<br/>         up to 2,000 ppm</p> <p>10. Interferences: (without filter)<br/>         H<sub>2</sub>S: &lt; 40 nA/ppm<br/>         CO: &lt; 0.5 nA/ppm<br/>         H<sub>2</sub>: None<br/>         NO<sub>2</sub>: &lt; 80 nA/ppm<br/>         SO<sub>2</sub>: &lt; 1 nA/ppm</p> <p>11. Warm-up Time:<br/>         8 h, when connected to a buffered potentiostat</p> <p>12. Nominal Sensor Life:<br/>         &gt; 2 Years</p> <p>13. Electrical Interface:<br/>         3-pin molex connector</p> <p>14. Gas Connector:<br/>         M16 X 1 Threaded</p> |
|--|---|

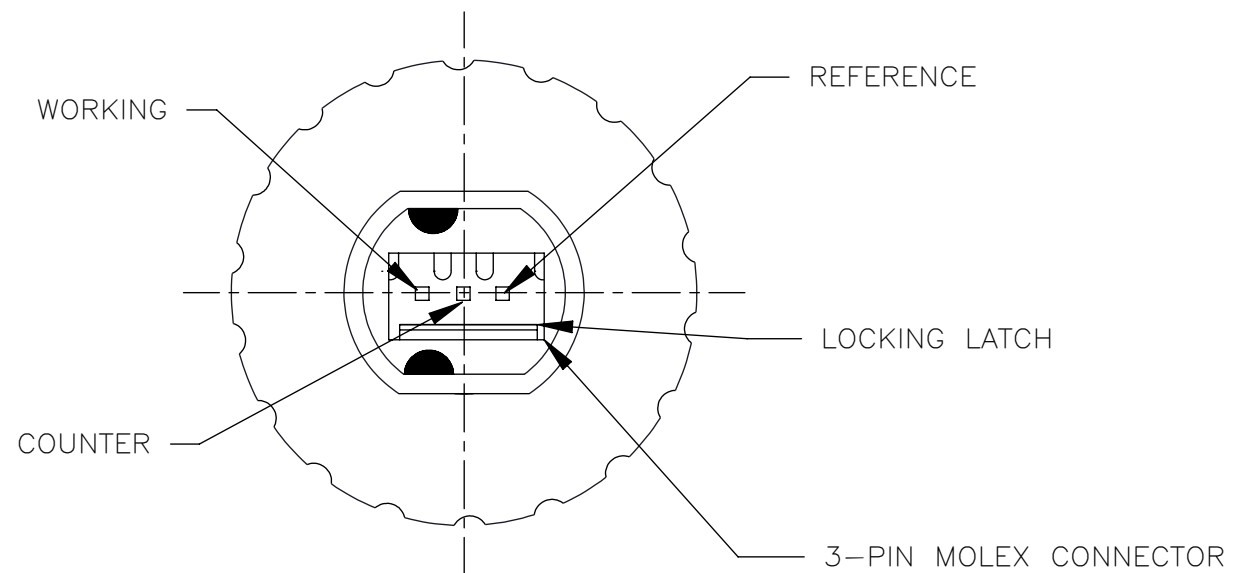
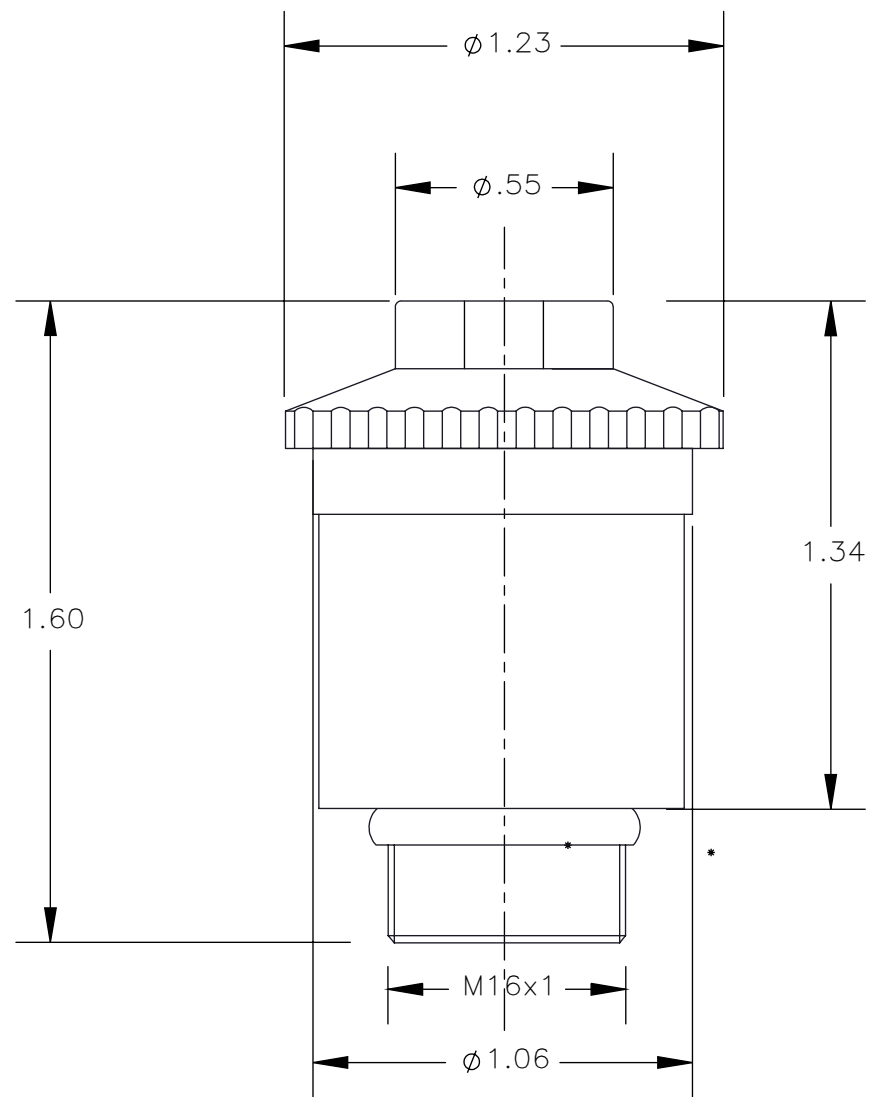
Released

TP-0001 REV 01

REVISION DETAIL UPDATED REVISION FOR PRODUCT REINSTATEMENT		<b>mextec</b> ® SALT LAKE CITY, UTAH <small>UNLESS OTHERWISE SPECIFIED          DIMENSIONS ARE IN INCHES AND PER          ASME Y14.5-2009</small> .XX = ± .01    ANGLES ±0°30' .XXX = ± .005 .XXXX = ± .002		<b>SPECIFICATION, MAX-625i NITRIC          OXIDE INDUSTRIAL SENSOR</b>	
DRAWN BY: Z. HANSEN		DATE: 10/19/18		SIZE <b>B</b>	DWG. NO. R108P67
				REV <b>C</b>	SCALE: 1:1    SHEET 1 OF 2

PROPRIETARY INFORMATION  
OF MAXTEC

Released



TP-001 REV 01

SIZE	DWG. NO.	REV
<b>B</b>	R108P67	<b>C</b>
SCALE: 1:1		SHEET 2 OF 2

PROPRIETARY INFORMATION OF MAXTEC