

8 7 6 5 4 3 2 1

REV	DCO'S AFFECTING THIS DRAWING	DATE	APPROVED
A	INITIAL REL.# 2171	10/12/05	D.L.
C	DCO # 4617 UPDATED SPECS	08/27/13	L.L.

ALL SPECIFICATIONS APPLY AT 1013 MILLIBAR, 25°C, DRY AMBIENT AIR.

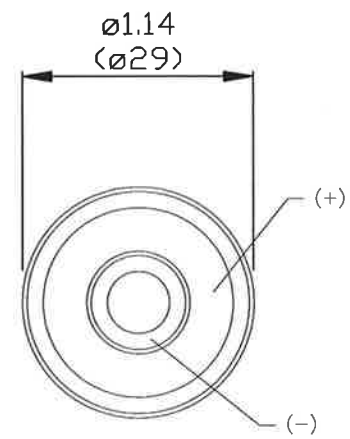
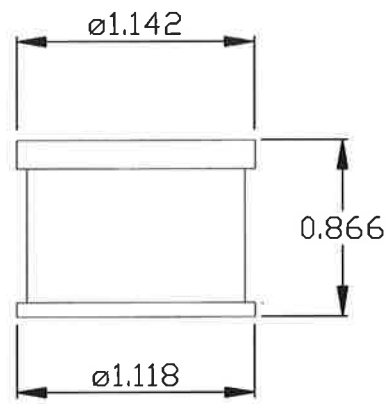
1. Output:  
25mV to 35mV
2. Operating Temperature:  
10° C to 40° C
3. Maximum Storage Temperature:  
-20° C to 50° C  
(Recommended: 5° C to 30° C)
4. Electrical Connection:  
Two gold plated slip rings
5. Range of Measurement (Full Scale):  
0 to 100% oxygen
6. Zero Offset:  
Less than or equal to 0.20 mV when exposed to 100% nitrogen for 5 minutes.
7. 90% Response Time:  
Less than or equal to 17 seconds @ 0.2 to 2.0 L/min
8. Linearity:  
Within 3.0% of full scale per ISO 21647 applied for 5 min

9. Stability:  
Less than 1% of full scale over an 8 hour period at constant temperature, pressure, and humidity. (between 20% - 100% oxygen)
10. Interference: PER DIN EN ISO 21647 and ISO 7767  
Less than 0.3% of full scale in presence of 80% Nitrous oxide  
Less than 0.3% of full scale in presence of 7.5% Halothane  
Less than 0.3% of full scale in presence of 7.5% Isoflurane  
Less than 0.3% of full scale in presence of 7.5% Enflurane  
Less than 0.3% of full scale in presence of 7.5% Sevoflurane  
Less than 0.3% of full scale in presence of 20% Desflurane  
Less than 0.3% of full scale in presence of 10% Carbon Dioxide
11. Temperature Compensation:  
NTC
12. Expected Life:  
>500,000% oxygen hours under normal operating conditions
13. Humidity:  
5% to 95% Relative Humidity non-condensing

UNLESS OTHERWISE SPECIFIED DIMENSIONS ARE IN INCHES AND PER ANSI Y14.5-1982		maxtec® SALT LAKE CITY, UTAH 84107	
.XX = ±.01 .XXX = ±.005 .XXXX = ±.002	ANGLES ±1°30'	SPECIFICATION, MAX-43 OXYGEN SENSOR	
Q.A. Gordon Roth 08/26/13	PREP Kevin Durst 11/05/04	SIZE B	FSCM NO. NUMBER 1S815 R109P08
MFG Eva Meads 08/26/13	CHKR Kevin Durst 10/13/05	SCALE: 1:1	REV C
	ENG Trevor Marshall 08/21/13	SHEET 1 OF 2	

R109P08

8 7 6 5 4 3 2 1



NOTE:  
1. DIMENSIONS IN INCHES

SIZE B	FSCM NO. 1S815	NUMBER R109P08	REV C
SCALE NONE		SHEET 2 OF 2	

PROPRIETARY INFORMATION  
MAXTEC

R109P08 C